



# Fairy Circle

You accidentally step into a fairy circle. You cannot escape. A friendly fairy whispers into your ear that if you recite the fairy spell at the right time on the right day of the month, you will be free.

Fairy Spell: \_\_\_ ' \_\_\_

\_\_\_ . \_\_\_

\_\_\_ . \_\_\_

Time of day:

Day of Week:

Date and Month:



# Fairy Spell

𐄂 𐄂 𐄂

𐄂 𐄂 𐄂 𐄂 𐄂 𐄂 𐄂

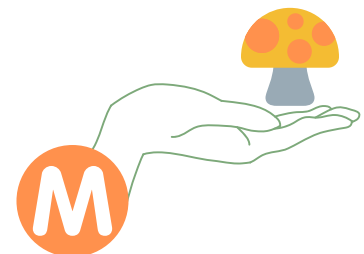
𐄂 𐄂 𐄂 𐄂 𐄂

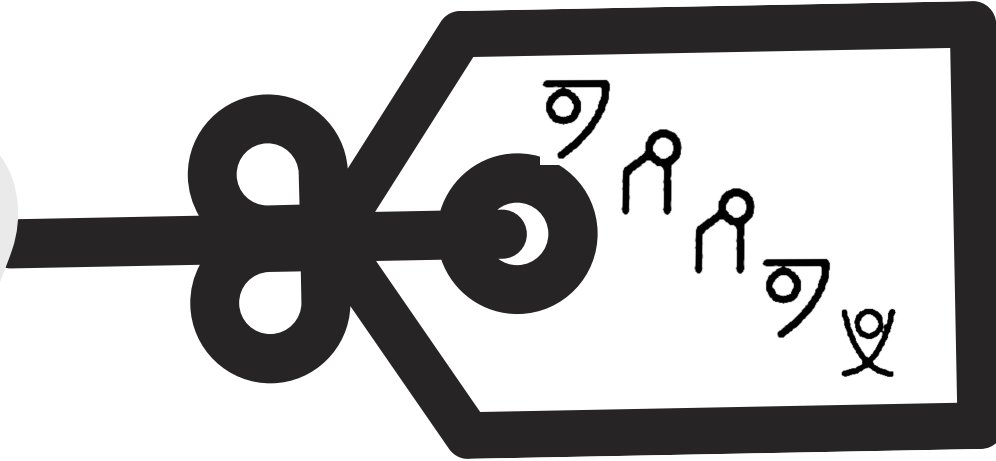
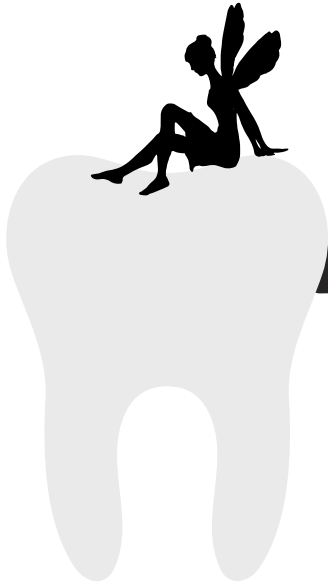
𐄂 𐄂 𐄂 𐄂 𐄂

**GU**

=

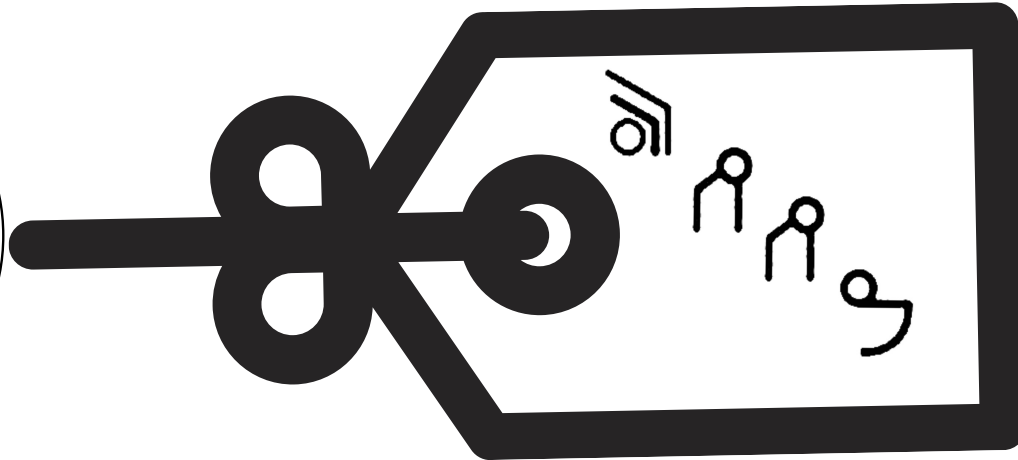
𐄂 𐄂



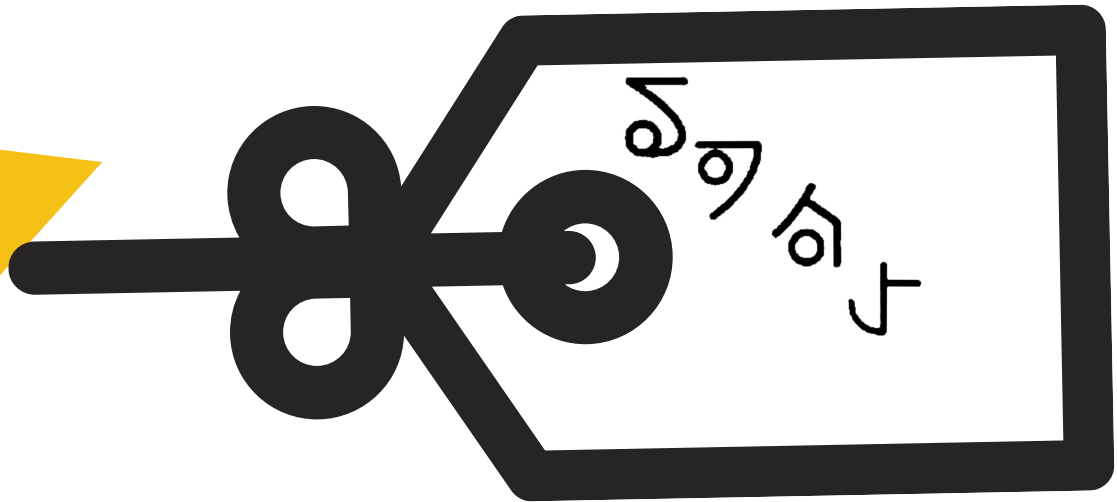


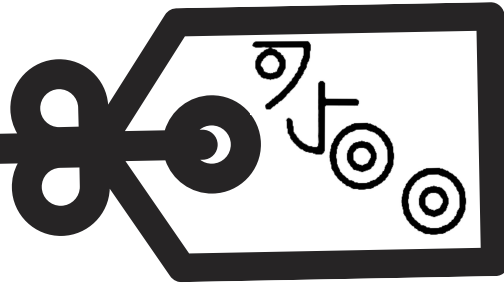
The Toothfairy



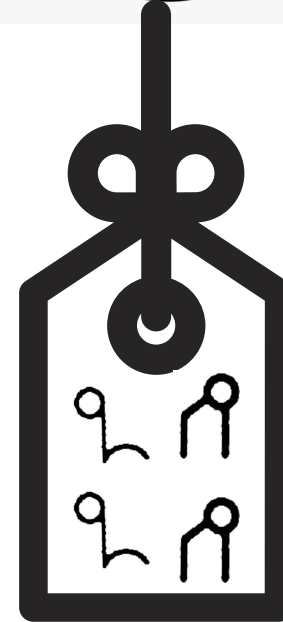
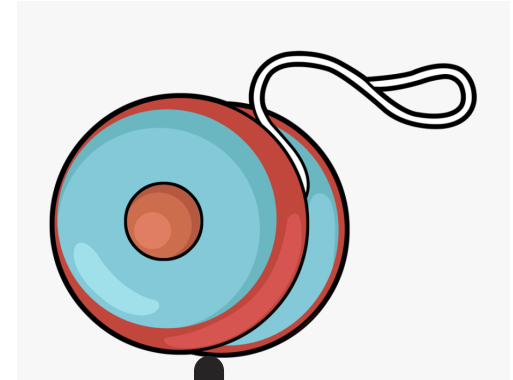
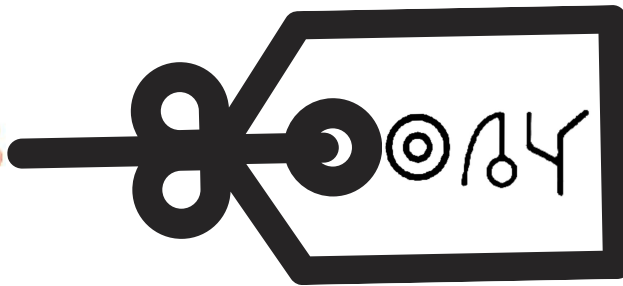


The Night fairy





# The Christmas Fairy

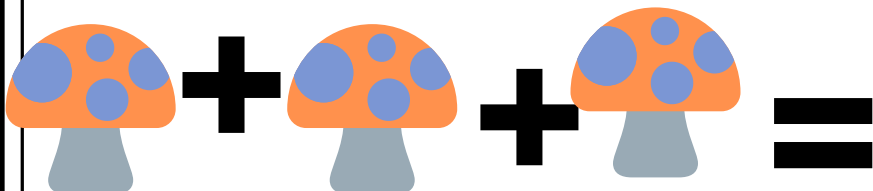
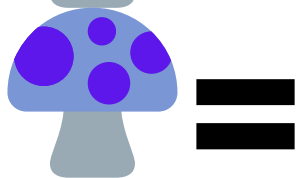




A	B	C	D	E	F	G	H	I	J	K	L	M
26	25	24	23	22	21	20	19	18	17	16	15	14
Z	Y	X	W	V	U	T	S	R	Q	P	O	N
1	2	3	4	5	6	7	8	9	10	11	12	13

## The Dating Fairy

i / w / gg



**DAY**